

'Inactive' hair follicles can be treated as they become 'active' over time. For IPL treatments, an average of 8-10 treatments are required to remove most visible hair. The treatment protocol depends on the equipment used and patient skin type. The area to be treated should be clean shaven and free of sunburn. Treatment sessions are usually 4 to 6 weeks apart. Treatment is carried out by trained Aesthetic Practitioners.

Photoepilation a permanent hair reduction method. Although IPL and Laser Treatments will permanently reduce the total number of body hairs, they will not result in a permanent removal of all hair.

Certain skin conditions, health irregularities, and medications can impact whether it is safe for a person to receive a light based hair removal treatment. Photo-sensitizing medications, or damage to the skin are contraindications to treatment. According to manufacturer of an IPL device, all IPL and laser devices should only be used on light to medium skin tones, and work best on darker hair.

## HAIR REMOVAL

ENZO

ENZO

**Opening Hours:**  
Monday-Saturday 9.00-6.00 pm  
Sunday Closed

**Enzo Aesthetic**  
320 Uxbridge Road W3 9QP  
Acton Town, London  
0208 896 0362  
0788 557 8839  
[www.enzo-beauty.co.uk](http://www.enzo-beauty.co.uk)  
[info@enzo-beauty.co.uk](mailto:info@enzo-beauty.co.uk)



## WHAT IS LASER HAIR REMOVAL?

Laser Hair Removal at Enzo Aesthetic is one of the most advanced Laser technology available to significantly reduce hair growth. There is a huge variety of treatments and products specifically designed for hair removal, however, what makes Laser Hair Removal unique is that it can provide astonishing long-lasting results. The Laser technology used at Enzo Aesthetic is most advanced diode laser technology, which passes light through the skin and into the hair root, to destroy the cells so they can no longer produce hair, leaving the rest of the surrounding tissue untouched. Clients describe the experience of the laser travelling on your skin as a "warming sensation". Our experienced Aesthetic Practitioner will design the perfect treatment regime for you, but usually we would recommend a course of 6-8 treatments.

All treatments are tailored to the individual and personal experiences and results may vary. We recommend a one to one consultation with our Treatment Coordinators to discuss your treatment options.

## WHAT AREAS CAN BE TREATED WITH LASER HAIR REMOVAL?

Laser Hair Removal at Enzo Aesthetic can treat even the most difficult areas fast and effectively. Some of the most popular areas of female clients want to treat are the upper lip, legs, underarm and bikini line. On the other hand, Laser Hair Removal is also very popular to our male clientele. Some of the most common areas of unwanted hair for men are the chest, stomach, back and face, ears and nose.

## IPL HAIR REMOVAL

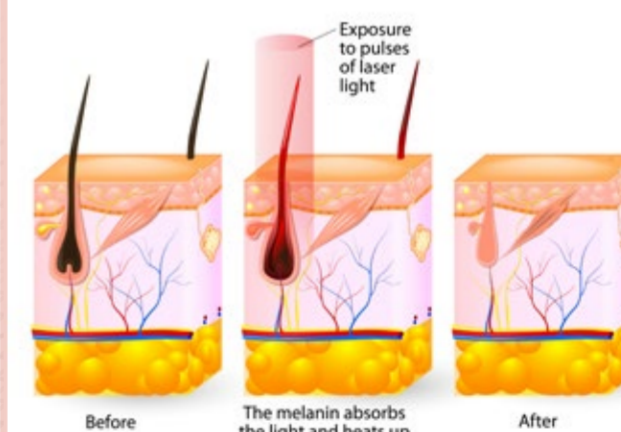
**Intense pulsed light (IPL)** is a technology used to target hair removal.

The technology uses a high-powered, hand-held, computer-controlled flashgun to deliver an intense, visible, broad-spectrum pulse of light, generally in the visible spectral range of 400 to 1200 nm. Various cutoff filters are commonly used to selectively filter out shorter wavelengths, especially potentially damaging ultra violet light.

The resulting light has a spectral range that targets specific structures and chromophores (e.g. melanin in hair, or oxyhemoglobin in blood vessels) that are heated to destruction and reabsorbed by the body. IPL shares some similarities with laser treatments, in that they both use light to heat and destroy their targets.

But unlike lasers that use a single wavelength (color) of light which typically matches only one chromophore and hence only treats one condition, IPL uses a broad spectrum that when used with interchangeable filters, allows it to be used against several conditions. This can be achieved when the IPL technician selects the appropriate filter that matches a specific chromophore.

## LASER HAIR REMOVAL



## DESCRIPTION

Intense pulsed light is the use of intense pulses of non-coherent light over a range of wavelengths from 500 nm to 1200 nm. Xenon flashlamps produce high output bursts of broad spectrum. Cooling is used to protect the skin in contact with the device.

## HAIR REMOVAL

IPL can reduce hair growth, most effectively in darker, coarser hair.

## PROTOCOL

Broad-spectrum light is applied to the surface of the skin, targeting melanin. This light travels through the skin until it strikes the hair shafts or the bulb (root). The bulb is usually where the highest concentration of melanin is located. As the light is absorbed, the bulb and most of the hair shaft are heated, destroying the hair-producing papilla. It is also claimed that heat conversion occurs directly in the darker capillaries that bring blood to the follicle.

At any one time, not all hair follicles are 'active', and only active hair follicles can be affected by the treatment.